

Swivel clamp connector bases

Aluminum

SPECIFICATION

Aluminium

plastic coated
black, RAL 9005, textured finish **SW**

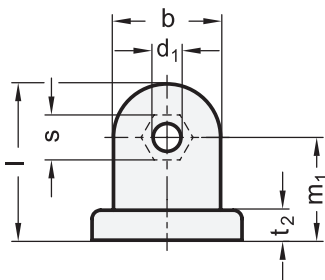
blank **BL**

matt shot-blasted

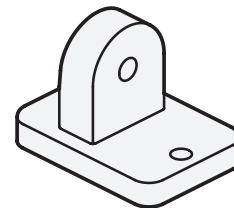
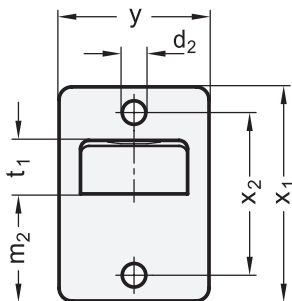
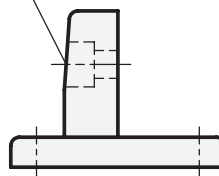
INFORMATION

Swivel clamp connector bases GN 271 can be assembled with the swivel clamp connectors GN 273 (see page 1849), GN 275 (see page 1854) or GN 277 (see page 1855) to create swivel clamp connector joints.

GN 271 swivel clamp connector bases are also suitable for mountings on **profile systems**.



Cast hexagonal socket
for hexagon nut d_3



GN 271

Description	b	d1	d2	d3	l	m1	m2	t1	t2	s	x1	x2	y	Δ
GN 271-25-BL	25	6.5	5.5	M 6	36.5	24	25	12.5	7	10	50	38	35	44
GN 271-25-SW	25	6.5	5.5	M 6	36.5	24	25	12.5	7	10	50	38	35	44

